

Heslington Parish Neighbourhood Plan
2nd Pre-Submission Version
(following withdrawal of originally submitted plan)

Habitats Regulations Assessment
Screening Report

September 2019
(As Updated November 2025)

CONTENTS

1. Introduction	3
Legislative Basis	3
Planning Context	5
2. Methodology	7
Identifying European Sites and their qualifying features	7
Qualifying features of the identified European Sites and summary of impacts	9
Appraisal of Neighbourhood Plan	14
3. Screening Assessment.....	15
Part 1 Assessment of the Heslington Parish Neighbourhood Plan	15
Part 2 Cumulative effects of the Neighbourhood Plan	34
4. Consultation	41
5. Conclusion	42
Annex 1: European Designated Sites Qualifying Features and Conservation Objectives	43
Annex 2: Statutory Consultation bodies summary comments on 1st Version Pre-Submission HPNP HRA Screening Assessment.....	60

1. Introduction

- 1.1 This Habitats Regulation Assessment Screening Report has been prepared by Heslington Parish Council in conjunction with the City of York Council (CYC) in accordance with the Neighbourhood Planning (General) Regulations 2012 (as amended) and Habitats Directive to support the Heslington Parish Neighbourhood Plan (HPNP).
- 1.2 The aim of this Screening Report is to assess whether there are likely to be significant effects on the qualifying features of European Designated Sites as a result of the emerging policies set out in the HPNP that would necessitate the production of a full Habitats Regulations Appropriate Assessment.
- 1.3 This report assesses, as far as practical, whether there are likely to be any significant effects on European Designated Sites within or relatively proximate to the approved Heslington Neighbourhood Plan area.

Legislative Basis

- 1.4 Article 6(3) of the EU Habitats Directive states that:
“Any plan or project not directly connected with, or necessary to, the management of the [European] site but likely to have a significant effect thereon, either individually or in combination with other plans or projects, shall be subject to appropriate assessment of its implications for the site in view of the site’s conservation objectives. In the light of the conclusions of the assessment of the implications for the site and subject to the provisions of paragraph 4, the competent national authorities shall agree to the plan or project only after having ascertained that it will not adversely affect the integrity of the site concerned and, if appropriate, after having obtained the opinion of the general public.”
- 1.5 The purpose of the Habitats Regulations Assessment (HRA) is therefore to ensure the protection of European Designated Sites (Natura 2000) wherever practicable. European Designated Sites are designed to form an ecologically coherent network of designated spaces across Europe.
- 1.6 European Designated Sites (Natura 2000) include **Special Protection Areas (SPAs)** and **Special Areas for Conservation (SAC)**. As a matter of policy, the government also expects authorities to treat **Ramsar sites, candidate Special Areas of Conservation (cSAC)** and **proposed Special Protection Areas (pSPA)** as if they are European Designated Sites for the purpose of considering development proposals that may affect them.

1.7 Definitions (taken from the DEFRA- Joint Nature Conservation Committee):

- **Special Protection Areas (SPAs)** are strictly protected sites classified in accordance with Article 4 of the EC Birds Directive, which came into force in April 1979. They are classified for rare and vulnerable birds and for regularly occurring migratory species.
- **Special Areas of Conservation (SACs)** are strictly protected sites designated under the EC Habitats Directive. Article 3 of the Habitats Directive requires the establishment of a European network of important high-quality conservation sites that will make a significant contribution to conserving the 189 habitat types and 788 species. The listed habitat types and species are those considered to be most in need of conservation at a European level (excluding birds).
- **Ramsar sites** are wetlands of international importance designated under the Ramsar Convention.

1.8 The Neighbourhood Planning (General) Regulations 2012 (as amended), state that submitted Plans need to be accompanied by a statement explaining how the proposed Plan meets the ‘basic conditions’ set out in Schedule 4B of the 1990 Town and Country Planning Act. These basic conditions include a requirement to demonstrate how the Plan is compatible with EU obligations, which include the need to undertake a Habitats Regulations Assessment.

1.9 In April 2018, a notable judgment by the European Court of Justice gave its ruling on the *People Over Wind*¹ case, which provided a new interpretation of when and how mitigation measures should be considered in an HRA. In departing from previous decisions, it clearly identifies that measures designed specifically to avoid or reduce likely significant effects should not be evaluated at the screening stage but reserved for the appropriate assessment. Subsequently, the Conservation of Habitats and Species and Planning (Various Amendments) (England and Wales) Regulations 2018, which came into force on 28 December 2018, amend the basic condition relating to Neighbourhood Plans prescribed in Regulation 32 and Schedule 2 (Habitats) of the Neighbourhood Planning (General) Regulations 2012 (as amended), substituting a new basic condition which states:

“The making of the neighbourhood development plan does not breach the requirements of Chapter 8 of Part 6 of the Conservation of Habitats and Species Regulations 2017”.

It is considered that the Heslington Parish Neighbourhood Plan (HPNP) and this HRA Screening Report complies with latest legislation.

¹ *Case C/323-17 People Over Wind*, Court of Justice of the European Union

Planning Context

- 1.10 The HPNP, once adopted, will present planning policy and guidance for the neighbourhood area. The HPNP is being prepared in the context of the adopted City of York Local Plan, which was submitted for independent examination on 25th May 2018. The Local Plan provides a strategic framework for how future development across the City of York will be planned and delivered and will be fully compliant with the National Planning Policy Framework (NPPF 2024)².
- 1.11 As part of the new Local Plan, the City of York has defined the detailed Green Belt boundaries around the city.
- 1.12 A Habitats Regulations Assessment was submitted alongside the City of York Local Plan (2018) for independent examination. This concluded that the plan would not have an adverse effect on the integrity of European designated nature conservation sites. However, following correspondence from Natural England in June 2018 in relation to evidencing the potential for recreational pressure at European designated sites as a result of growth proposed in the Local Plan, City of York Council commissioned two visitor surveys, one for Strensall Common (SAC) and a second for the Lower Derwent Valley (SPA) and Skipwith Common (SAC).
- 1.13 Most relevant to the HPNP are the survey results in relation to the Lower Derwent Valley (LDV), which is the closest European designated site to the neighbourhood plan area. The report considers that the closest points of open access on to the LDV from York are well managed and likely to attract people specifically interested in wildlife. Although the report states that there is likely to be significant effects from development, there is mitigation presented in the report. This is deemed sufficient to rule out adverse effects on the integrity with respect to recreation for any single development alone, unless within 1km. It also is able to rule out adverse effects on the integrity, in relation to recreational pressure, for the quantum of development as a whole (in-combination). The report considers that monitoring and review should be included within the York Local Plan. The outcomes of the survey report concur with the conclusions in the submitted HRA for the York Local Plan.

² References were made throughout the original Pre-Submission and Submission versions to NPPF 2012 and 2019 respectively to add useful context. In December 2024 an updated NPPF was released by Government. In line with CYC guidance, the Pre-Submission version of the plan and its supporting documents is written to reference NPPF 2024.

- 1.14 However, the results of the Strensall Common visitor survey concluded a 24% uplift in recreational pressure as a result of proposed development within close proximity to the site. Consequently, the revised Habitat Regulation Assessment (2019)³, which takes account of the survey results, concluded that two sites should be removed from the plan in order to avoid adverse effects on the integrity of the Common; Site ST35: Queen Elizabeth Barracks, Strensall and Site H59: Howard Road, Strensall. Consequently, the development sites concerned were removed from City of York adopted Local Plan. It is considered that the changes to the Local Plan proposed in Strensall do not impact the Heslington Parish Neighbourhood Plan directly, although the HRA concerns are very similar.

³ <https://democracy.york.gov.uk/documents/s130554/Annex%20C%20-%20Habitat%20Regulation%20Assessment%20Feb%202019.pdf>

2. Methodology

Identifying European Sites and their qualifying features

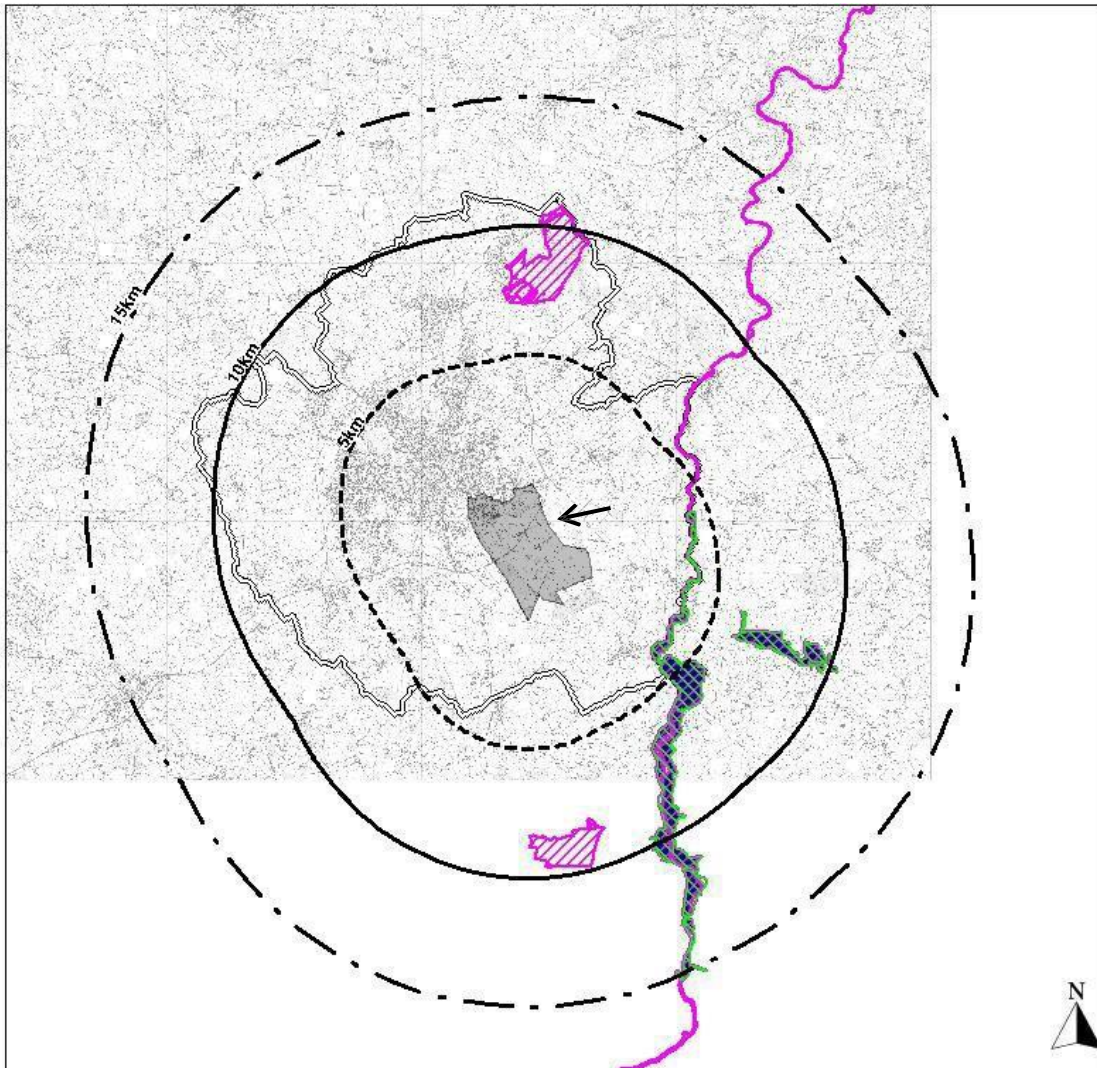
- 2.1 The first stage of preparing this Screening Report is identifying the European Designated Sites within the Neighbourhood Plan area or in close proximity to it.
- 2.2 This study considers potential effects on all European sites within 15km of the HPNP area boundary, together with any additional downstream sites that may be hydrologically linked to the plan's zone of influence. This is considered to be a suitably precautionary starting point for the assessment of the plan and is consistent with the HRA prepared for the adopted Local Plan.
- 2.3 European Designated Sites have been identified using data from Natural England (see Figure 1, page 8). This identifies the following sites for consideration within the assessment:

Site name	Designation	Closest Distance (approx.)
Strensall Common	SAC	11km
Skipwith Common	SAC	12km
River Derwent	SAC	6km
Lower Derwent Valley	SAC, SPA, Ramsar	5km
Humber Estuary	SAC, SPA, Ramsar	Approximately 30km downstream via River Ouse

- 2.4 Table 1 below (see page 9), sets out an outline of the qualifying features of the identified European Sites and a summary of impacts likely to affect the integrity of the protected sites. More detailed information regarding the designation of each site is set out in Annex 1.

Figure 1

Identifying European Designated Sites with 15km of Heslington Parish Neighbourhood Plan Area



Source: Natural England Spatial Data Catalogue, 2017

-  City of York Council Boundary
-  Special Protection Areas (SPAs)
-  Special Areas of Conservation (SACs)
-  Ramsar
-  Potential Special Protection Area (pSPA)
-  Possible Special Area of Conservation (pSAC)
-  Heslington Neighbourhood Plan Boundary

Based upon the Ordnance Survey mapping with the permission of the Controller of Her Majesty's Stationery Office, Crown Copyright.
 Unauthorised reproduction infringes Crown copyright and may lead to prosecution or civil proceedings.
 City of York Council, Licence No. 1000 20818. Prepared by Forward Planning 2018

Qualifying features of the identified European Sites and summary of impacts

Table 1

Site	Qualifying Features	Summary of current threats and potential vulnerabilities to outcomes of the Plan
Strensall Common SAC	H4010. Northern Atlantic wet heaths with <i>Erica tetralix</i> ; Wet heathland with cross-leaved heath H4030. European dry heaths	Approximately 570ha site supporting extensive areas of wet and dry heath (M16 <i>Erica tetralix</i> – <i>Sphagnum compactum</i> wet heath and H9 <i>Calluna vulgaris</i> – <i>Deschampsia flexuosa</i> dry heath), with complex mosaics of wet heath and transition habitats. The site is used for training by the MOD, but this is not thought to compromise the interest of the site. The main issue currently affecting habitats is a lack of management and hence scrub encroachment; this is being controlled through management agreements with the MOD and their tenants. Public access via PROWs and Permissive Paths is permitted when training is not taking place, and is subject to an integrated management plan agreed between the MOD, NE and Yorkshire Wildlife Trust. The absence of open access limits the exposure of the interest features to effects associated with visitor pressure.
Skipwith Common SAC	H4010. Northern Atlantic wet heaths with <i>Erica tetralix</i> ; wet heathland with cross-leaved heath (or 'wet heath') H4030. European dry heaths (or 'dry heath').	Skipwith Common supports extensive areas of both wet and dry heath, with rush pasture, mire, reedbed, open water and woodland. The entire European site is managed as a National Nature Reserve by Natural England, grazed with cattle and sheep and has been dedicated as open access land under CROW. The number of visitors is thought to be increasing causing some erosion and disturbance of grazing animals and the heathland could be vulnerable to nitrogen deposition. The site remains both fragile and vulnerable. The underpinning Skipwith Common SSSI was assessed by Natural England to be in 'favourable' or 'unfavourable recovering' condition in 2014. The corresponding Site Improvement Plan (SIP) for the European site identifies, inter alia, a number of threats including public pressure, air pollution and drainage.
River Derwent SAC	H3260 Water courses of plain to montane levels with the <i>Ranunculus fluitantis</i> and <i>Callitriche-Batrachion</i> vegetation ('Rivers with floating vegetation often dominated by water-crowfoot')	The River Derwent SAC is primarily designated for its population of river lamprey: only the lower reaches between Ryemouth and the confluence with the Ouse are designated, reflecting the spawning distribution of this species in the Derwent system. However, the designated section supports diverse communities of aquatic flora and fauna also, including flora uncommon

Site	Qualifying Features	Summary of current threats and potential vulnerabilities to outcomes of the Plan
	S1095 Sea lamprey <i>Petromyzon marinus</i>	in Northern Britain and a diverse fish community. River and sea lamprey populations spawn in the lower reaches. The main issues affecting the SAC have been identified as excess fine sedimentation, physical modification, lack of shading and shelter in the river and its bankside and barriers to migratory fish passage. The Environment Agency and Natural England are developing a restoration plan to help the River Derwent SSSI move towards favourable condition. This includes a range of actions including fencing off sections trampled by stock to allow vegetation growth, investigation into the potential for fish passes and improving riparian and marginal habitats by increasing tree cover. A ramp is being installed at Barmby Barrage to help lamprey movement into the river.
Lower Derwent Valley SAC	H6510. Lowland hay meadows (<i>Alopecurus pratensis</i> , <i>Sanguisorba officinalis</i>) H91E0. Alluvial forests with <i>Alnus glutinosa</i> and <i>Fraxinus excelsior</i> (<i>Alno-Padion</i> , <i>Alnion incanae</i> , <i>Salicion albae</i>); Alder woodland on floodplains S1355. <i>Lutra lutra</i> ; Otter	The floodplain of the lower reaches of the River Derwent SAC is dominated by the Lower Derwent Valley SAC, Lower Derwent Valley SPA and Lower Derwent Valley Ramsar. The Lower Derwent Valley SAC supports the largest area of high-quality traditionally managed lowland hay meadows (mainly corresponding to MG4 <i>Alopecurus pratensis</i> – <i>Sanguisorba officinalis</i> grassland) in the UK. Ecological variation is well-developed, particularly in the transitions between this grassland type and other types of wet and dry grassland, swamp and fen vegetation, and there is an area of damp alder woodland at Thornton Ellers adjoining marsh and tall fen communities.
Lower Derwent Valley SPA	A037 <i>Cygnus columbianus bewickii</i> ; Bewick's swan (Non-breeding) A050 <i>Anas penelope</i> ; Eurasian wigeon (Non-breeding) A052 <i>Anas crecca</i> ; Eurasian teal (Non-breeding) A056 <i>Anas clypeata</i> ; Northern shoveler (Breeding) A140 <i>Pluvialis apricaria</i> ; European golden plover (Non-breeding) A151 <i>Philomachus pugnax</i> ; Ruff (Non-breeding) Waterbird assemblage.	The traditionally managed lowland hay meadows of the Lower Derwent Valley SAC, the River Derwent SAC, and the associated wetland habitats (including fens, swamps, valley mires, wet woodland and other freshwater habitats lying adjacent to the River Derwent, Pocklington Canal and The Beck support a diverse range of waterbirds throughout the year, and these sites are partly or entirely co-incident with the Lower Derwent Valley SPA. In winter the site supports large numbers of swans, ducks and waders, as well as Bittern, whilst in summer the floodplain supports breeding waders, Corncrake and Spotted Crake. The character and species composition of the grassland, fen and swamp communities is largely controlled by topography, differences in the extent of winter flooding and
Lower Derwent Valley	Criterion 1: One of the most important examples of traditionally managed	

Site	Qualifying Features	Summary of current threats and potential vulnerabilities to outcomes of the Plan
<p>Ramsar</p>	<p>species rich alluvial flood meadow in the UK.</p> <p>Criterion 2: Rich assemblage of wetland invertebrates including 16 species of dragonfly and damselfly; 15 British Red Data Book species; and (uniquely in the UK) the leafhopper <i>Cicadula ornata</i>.</p> <p>Criterion 4: Important site for passage migrants in spring, notably Ruff and Whimbrel.</p> <p>Criterion 5: Assemblages of international importance: 31942 waterfowl (5 year peak mean 1998/99- 2002/2003) in winter.</p> <p>Criterion 6: Species/populations occurring at levels of international importance: Wigeon, Teal.</p>	<p>by the type of agricultural management.</p> <p>The Ramsar site is coincident with the Lower Derwent Valley SAC (i.e. it does not include the River Derwent itself) and most of the interest features are effectively the same as those of the SPA and SAC (with the exception of the invertebrate interest).</p> <p>The designated sites of the Derwent system have been historically affected by water level issues (due to abstraction and control regimes) and water quality. The main threats to the Lower Derwent Valley SAC are associated with management and water levels / flooding: although most MG4 lowland hay meadow communities are associated with floodplains, they are not inundation communities and excess water associated with high water tables is considered a greater threat to the community than soil dryness (Wheeler <i>et al.</i> 2004). Water levels in general are an issue in the Valley and this is being addressed by a collaborative project between Natural England, the Environment Agency and Yorkshire Water. Proposals are being developed to change river flows to improve the operation of Barmby Barrage on the River Derwent, which are aimed at improving drainage from the SACs during medium to high flows and improving passage for lamprey species.</p> <p>Recreational disturbance is also identified as a potential issue for the SPA due to increased house building adjacent to the site. There is an extant planning permission for the extraction of coal by deep mining, which has been reviewed by the Minerals Planning Authority and an appropriate compensation/mitigation package has been agreed by the MPA/English Nature and the holder of the permission.</p> <p>Trials are in progress on East Cottingwith flood meadow that will help to inform any management changes required to protect the integrity of the lowland hay meadows. The site will be sensitive to a range of issues although the main current concerns are water quantity (flooding); water level management; habitat management; water quality and recreational pressure.</p> <p>Draft Supplementary Advice for Conserving and Restoring Site Features at the Lower Derwent</p>

Site	Qualifying Features	Summary of current threats and potential vulnerabilities to outcomes of the Plan
		<p>Valley SAC were published by Natural England in June 2016. This provides more detail on the conservation objectives and the range of ecological attributes which are most likely to contribute to a site's overall integrity and the minimum targets each qualifying feature needs to achieve in order to meet the site's objectives.</p>
<p>Humber Estuary SAC</p>	<p>H1110. Sandbanks which are slightly covered by sea water all the time; Subtidal sandbanks H1130. Estuaries H1140. Mudflats and sandflats not covered by seawater at low tide; Intertidal mudflats and sandflats H1150. Coastal lagoons H1310. <i>Salicornia</i> and other annuals colonising mud and sand; Glasswort and other annuals colonising mud and sand H1330. Atlantic salt meadows (<i>Glauco-Puccinellietalia maritima</i>) H2110. Embryonic shifting dunes</p>	<p>The Humber is a muddy, macro-tidal estuary, fed by a number of rivers including the Rivers Ouse, Trent and Hull. It is the second largest coastal plain Estuary in the UK and supports a full range of saline conditions from the open coast to the limit of saline intrusion on the tidal rivers of the Ouse and Trent. Suspended sediment concentrations are naturally high and are derived from a variety of sources, including marine sediments and eroding boulder clay along the Holderness coast. Wave exposed sandy shores are found in the outer/open coast areas of the estuary.</p> <p>With regard to the SAC features, the primary features (Estuaries and Intertidal mudflats and sandflats) are found throughout the main body of the estuary, along with other estuarine features (Subtidal sandbanks; Atlantic salt meadows). The inner estuary supports extensive areas of reed bed with areas of mature and developing saltmarsh backed by grazing marsh in the middle and outer estuary. The dune features are largely found in the outer estuary. The fish species include river lamprey and sea lamprey which breed in the River Derwent; Grey seals are largely restricted to the outer estuary and breeding colonies at Donna Nook.</p>
<p>Humber Estuary SPA</p>	<p>A021 <i>Botaurus stellaris</i>; Great bittern (Non-breeding) A021 <i>Botaurus stellaris</i>; Great bittern (Breeding) A048 <i>Tadorna</i>; Common shelduck (Non-breeding) A081 <i>Circus aeruginosus</i>; Eurasian marsh harrier (Breeding) A082 <i>Circus cyaneus</i>; Hen harrier (Non-breeding) A132 <i>Recurvirostra avosetta</i>; Pied avocet (Non-breeding) A132 <i>Recurvirostra avosetta</i>; Pied avocet (Breeding) A140 <i>Pluvialis apricaria</i>; European golden plover (Non-breeding) A143 <i>Calidris canutus</i>; Red knot (Non-breeding) A149 <i>Calidris alpina</i>; Dunlin (Non-breeding) A151 <i>Philomachus pugnax</i>; Ruff (Non-breeding) A156 <i>Limosa islandica</i>; Black-tailed godwit</p>	<p>Approximately one-third of the estuary is exposed as mud or sand-flats at low tide and these support a range of benthic communities that are an important feeding resource for wintering birds and passage migrants (especially geese, ducks and waders). The extensive reed beds of the inner estuary provide breeding habitat for Bittern and Marsh harrier; the outer estuary supports large tern colonies in the summer.</p> <p>The Ramsar site is largely coincident with the SAC and/or SPA and the interest features are effectively the same as those of the SAC and SPA</p>

Site	Qualifying Features	Summary of current threats and potential vulnerabilities to outcomes of the Plan
	<p>(Non- breeding) A157 <i>Limosa lapponica</i>; Bar-tailed godwit (Non-breeding) A162 <i>Tringa totanus</i>; Common redshank (Non- breeding) A195 <i>Sterna albifrons</i>; Little tern (Breeding) Waterbird assemblage</p>	<p>(with the exception of natterjack toad in the outer dunes).</p> <p>The Humber Estuary is subject to the impacts of human activities (past and present) as well as ongoing processes such as sea level rise and climate change. Key issues include coastal squeeze, impacts on the sediment budget and geomorphological structure and function of the estuary (due to sea level rise, flood defence works, dredging and the construction, operation and maintenance of ports, pipelines and other infrastructure), changes in water quality and flows, pressure from additional built development and damage and disturbance arising from access, recreation and other activities. Coastal squeeze is being addressed through the development and implementation of the Humber Flood Risk Management Strategy. Diffuse pollution is being addressed through a range of measures including implementation of the Waste Water Framework Directive and Catchment Sensitive Farming initiatives.</p>
<p>Humber Estuary Ramsar</p>	<p>Criterion 1: Representative example of a near-natural estuary with dune systems and humid dune slacks, estuarine waters, intertidal mud and sand flats, saltmarshes, and coastal brackish/saline lagoons. Criterion 3: Supports second largest grey seal <i>Halichoerus grypus</i> colony in England at Donna Nook. The dune slacks at Saltfleetby - Theddlethorpe are the most north-easterly natterjack toad <i>Bufo calamita</i> breeding site in the UK. Criterion 5: 153,934 waterfowl (5 year peak mean 1996/97-2000/01). Criterion 6: Species/populations occurring at levels of international importance: Bartailed godwit; Golden plover; Shelduck; Dunlin; Knot; Black-tailed godwit; Redshank. Criterion 8: Important migration route for river lamprey <i>Lampetra fluviatilis</i> and sea lamprey <i>Petromyzon marinus</i> between coastal waters and their spawning areas.</p>	<p>Supplementary Advice on Conserving and Restoring Site Features in the SAC was published by Natural England in March 2017. This supplementary advice to the Conservation Objectives describes in more detail the range of ecological attributes on which the qualifying features will depend and which are most likely to contribute to a site's overall integrity. It sets out minimum targets for each qualifying feature to achieve in order to meet the site's objectives.</p>

Appraisal of Neighbourhood Plan

- 2.5 The next stage of the Screening is to understand the extent to which the HPNP could have a significant effect on the European Designated Sites. Specifically, the assessment considers any potential effect that the policies may have on the 'qualifying features' and vulnerabilities of each European Designated Site.
- 2.6 All proposed policies and any site allocations included within the Heslington Parish Neighbourhood Plan are therefore to be appraised against identified site's features and vulnerabilities. Cumulative effects have also been considered within the assessment to understand whether the Neighbourhood Plan is likely to have significant effects in combination with other plans or programmes.
- 2.7 Section 3 of this report sets out the findings of this appraisal split into:

Part 1: Assessment of the Neighbourhood Plan

Part 2: Cumulative effects of the Neighbourhood Plan.

3. Screening Assessment

Part 1 Assessment of the Heslington Parish Neighbourhood Plan

- 3.1 The table below provides an assessment of any likely significant effect of each Neighbourhood Plan policy on the European Designated Sites. For the purposes of this assessment the policies appraised are those that were issued in the Heslington Neighbourhood Plan 2nd Pre-Submission version.

Key to the Screening Assessment

No likely significant effect (NLSE) on the site's qualifying features

Likely significant effect (LSE) on the site's qualifying features

Uncertain whether it is NSLE or LSE

Policy	Policy intention and commentary	European sites								
		Strensall Common SAC	Skipwith Common SAC	River Derwent SAC	Lower Derwent Valley SAC	Lower Derwent SPA	Lower Derwent Valley Ramsar	Humber Estuary SAC	Humber Estuary SPA	Humber Estuary Ramsar
HES 1: SUSTAINING THE VITALITY AND THE VIABILITY OF MAIN STREET (SOUTH)	<p>The purpose of this Policy area is:</p> <ul style="list-style-type: none"> To promote employment opportunities in Heslington that help to create sustainable life-work balance To maintain and enable a balanced range of local community facilities to meet local need <p>Importantly, the current mixed commercial and residential character of Main Street [South] should be preserved and any development proposals, while being sensitive to the needs of local farmers and residents, should not reduce the amenity value for residents.</p> <p>Conclusion <i>This policy will not affect the Designated Sites' vulnerabilities and therefore no likely significant effects are anticipated to result from this policy.</i></p>	NLSE	NLSE	NLSE	NLSE	NLSE	NLSE	NLSE	NLSE	NLSE
HES 2: NEW BUSINESS AND EMPLOYMENT DEVELOPMENT	<p>The purpose of this Policy area is:</p> <ul style="list-style-type: none"> To promote employment opportunities in Heslington that help to create sustainable life-work balance To maintain and enable a balanced range of local community facilities to meet local need 	NLSE	NLSE	NLSE	NLSE	NLSE	NLSE	NLSE	NLSE	NLSE

Policy	Policy intention and commentary	European sites								
		Strensall Common SAC	Skipwith Common SAC	River Derwent SAC	Lower Derwent Valley SAC	Lower Derwent SPA	Lower Derwent Valley Ramsar	Humber Estuary SAC	Humber Estuary SPA	Humber Estuary Ramsar
	<p>This policy recognises the strategic importance of the science parks and the farming community. It enables employment close to new housing, to provide local opportunities and create more sustainable work-life patterns. The policy also enables farm diversification.</p> <p>The locations supported for development are in existing areas (University of York Campuses) and within Strategic sites identified through the York Local Plan and farmsteads within the Parish. The HPNP does not allocate development sites as they are determined through the York Local Plan. No individual assessment of these sites is therefore included in this assessment as this will be dealt with through the York Local Plan HRA. See individual site assessments for the Science Park and University of York campuses.</p> <p>Conclusion <i>In general, this policy will not affect the Designated Sites' vulnerabilities and therefore no likely significant effects are anticipated to result from this policy.</i> <i>See also individual site assessments below.</i></p>									

Policy	Policy intention and commentary	European sites								
		Strensall Common SAC	Skipwith Common SAC	River Derwent SAC	Lower Derwent Valley SAC	Lower Derwent SPA	Lower Derwent Valley Ramsar	Humber Estuary SAC	Humber Estuary SPA	Humber Estuary Ramsar
HES 3: AGRICULTURE AND RURAL ENTERPRISE	<p>The purpose of this policy is to support the working farms in Heslington Parish as viable, thriving businesses, whilst making a positive contribution to the Parish’s green infrastructure.</p> <p>Application of this policy ensures that the operational requirements of farms and rural businesses are considered when development is proposed for the rural parts of the Parish.</p> <p>The Policy sets out the criteria wherein new development would be supported but does not identify the specific locations at which this may be relevant. As such, case-by-case future assessment may be required to understand whether the proposed activity has direct or indirect impacts on Designated Sites.</p> <p>Conclusion <i>This policy will not affect the Designated Sites’ vulnerabilities and therefore no likely significant effects are anticipated to result from this policy.</i></p>	NLSE	NLSE	NLSE	NLSE	NLSE	NLSE	NLSE	NLSE	NLSE
HES 4: SUSTAINABLE DESIGN	<p>The purpose of this policy is to ensure that development is designed to be sustainable and inclusive. As part of the development process, rigorous analysis of the site and context is essential. This includes:</p>	NLSE	NLSE	NLSE	NLSE	NLSE	NLSE	NLSE	NLSE	NLSE

Policy	Policy intention and commentary	European sites								
		Strensall Common SAC	Skipwith Common SAC	River Derwent SAC	Lower Derwent Valley SAC	Lower Derwent SPA	Lower Derwent Valley Ramsar	Humber Estuary SAC	Humber Estuary SPA	Humber Estuary Ramsar
	<p>a) Complementing the surrounding character areas in terms of scale, height, massing, spacing, urban grain and set-back from street frontages;</p> <p>b) Providing active frontages to streets and public spaces, so as to provide natural surveillance;</p> <p>c) Providing a clear separation between private spaces (rear gardens) and public spaces and streets;</p> <p>d) Creating attractive, safe, permeable and convenient pedestrian environments, linking to the surrounding footpath network;</p> <p>e) Using permeable materials for hard surfaces;</p> <p>f) Providing a range of parking solutions as an integral part of layout, ensuring that parking does not dominate the street scene.</p> <p>Application of this policy seeks to ensure that development proposals are designed to be sustainable and inclusive. It seeks to promote sustainability by addressing local character, amenity, safety and pedestrian convenience.</p> <p>Conclusion <i>This policy will not affect the Designated Sites' vulnerabilities and therefore no likely significant effects are anticipated to result from this policy.</i></p>									

Policy	Policy intention and commentary	European sites								
		Strensall Common SAC	Skipwith Common SAC	River Derwent SAC	Lower Derwent Valley SAC	Lower Derwent SPA	Lower Derwent Valley Ramsar	Humber Estuary SAC	Humber Estuary SPA	Humber Estuary Ramsar
HES 5: CRIME PREVENTION AND REDUCTION	<p>The purpose of this policy is to ensure that development is designed to be sustainable and inclusive.</p> <p>The policy ensures development proposals are designed to create safe communities and reduce the likelihood and fear of crime.</p> <p>Conclusion <i>This policy will not affect the Designated Sites' vulnerabilities and therefore no likely significant effects are anticipated to result from this policy.</i></p>	NLSE	NLSE	NLSE	NLSE	NLSE	NLSE	NLSE	NLSE	NLSE
HES 6: URBAN CHARACTER	<p>The purpose of this policy is to ensure that new development complements the local and historic character of Heslington.</p> <p>It seeks to protect the particular features that contribute to the area's distinctive character. High quality contemporary design is entirely appropriate in historic settings and will be considered for approval where it complements the qualities of the site and its context.</p> <p>Conclusion <i>This policy will not affect the Designated Sites' vulnerabilities and therefore no likely significant effects are anticipated to result from this policy.</i></p>	NLSE	NLSE	NLSE	NLSE	NLSE	NLSE	NLSE	NLSE	NLSE

Policy	Policy intention and commentary	European sites								
		Strensall Common SAC	Skipwith Common SAC	River Derwent SAC	Lower Derwent Valley SAC	Lower Derwent SPA	Lower Derwent Valley Ramsar	Humber Estuary SAC	Humber Estuary SPA	Humber Estuary Ramsar
HES 7: CONVERSION OF EXISTING BUILDINGS	<p>The purpose of this policy is to ensure that conversion or extensions to existing buildings are of a scale that is subservient to the original building and are sited so as not to dominate the original.</p> <p>This policy supports building conversions and extensions which complement the vernacular forms, scale and character of buildings.</p> <p>Conclusion <i>This policy will not affect the Designated Sites' vulnerabilities and therefore no likely significant effects are anticipated to result from this policy.</i></p>	NLSE	NLSE	NLSE	NLSE	NLSE	NLSE	NLSE	NLSE	NLSE
HES 8: NEW HOUSING	<p>This purpose of this policy is to ensure that new housing development is sustainable and meets local need. Housing development proposals will be supported, providing they meet six specified criteria.</p> <p>The York Local Plan retains Heslington's status (including the village but excluding parts of the University of York campuses) within the general extent of the Green Belt. The proposed Green Belt is a material consideration that underpins this policy.</p> <p>The HPNP does not designate specific sites for development and therefore no effects can be attributed at this stage. As such, case-by-case future</p>	NLSE	NLSE	NLSE	NLSE	NLSE	NLSE	NLSE	NLSE	NLSE

Policy	Policy intention and commentary	European sites								
		Strensall Common SAC	Skipwith Common SAC	River Derwent SAC	Lower Derwent Valley SAC	Lower Derwent SPA	Lower Derwent Valley Ramsar	Humber Estuary SAC	Humber Estuary SPA	Humber Estuary Ramsar
	<p>assessment may be required to understand whether the proposed activity has direct or indirect impacts on Designated Sites. It is anticipated that regardless of the location within the Parish itself, there would be no likely significant effects as a result of development.</p> <p>Conclusion <i>This policy will not affect the Designated Sites' vulnerabilities and therefore no likely significant effects are anticipated to result from this policy.</i></p>									
HES 9: HOUSING MIX AND AFFORDABILITY	<p>The purpose of this policy is to ensure that housing development on sites designated by the York Local Plan is sustainable, includes a balanced mix of house types and meets local need. It seeks to ensure affordable housing is located within the York Local Plan development sites, so as to meet local needs. Housing schemes should provide a scale and variety of housing that reflects and encourages a diverse social mix.</p>	NLSE	NLSE	NLSE	NLSE	NLSE	NLSE	NLSE	NLSE	NLSE

Policy	Policy intention and commentary	European sites								
		Strensall Common SAC	Skipwith Common SAC	River Derwent SAC	Lower Derwent Valley SAC	Lower Derwent SPA	Lower Derwent Valley Ramsar	Humber Estuary SAC	Humber Estuary SPA	Humber Estuary Ramsar
	<p>Conclusion <i>This policy will not affect the Designated Sites' vulnerabilities and therefore no likely significant effects are anticipated to result from this policy.</i></p>									
HES: 10 HOUSES IN MULTIPLE OCCUPATION	<p>The purpose of this policy is to ensure that housing development is sustainable, includes a balanced mix of house types and meets local need.</p> <p>The policy supports development proposals that:</p> <ul style="list-style-type: none"> a) Would not harm the character and appearance of the building, adjacent buildings or the local landscape context; b) The design, layout and intensity of use of the building would not have an unacceptable impact on neighbouring residential amenities; and c) Internal and external amenity space, refuse storage and car and bicycle parking is provided at an appropriate quantity and is of a high standard so as not to harm visual amenity. <p>The policy is based on the York Local Plan Policy H8.</p> <p>Conclusion <i>This policy will not affect the Designated Sites' vulnerabilities and therefore no likely significant effects are anticipated to result from this policy</i></p>	NLSE	NLSE	NLSE	NLSE	NLSE	NLSE	NLSE	NLSE	NLSE

Policy	Policy intention and commentary	European sites								
		Strensall Common SAC	Skipwith Common SAC	River Derwent SAC	Lower Derwent Valley SAC	Lower Derwent SPA	Lower Derwent Valley Ramsar	Humber Estuary SAC	Humber Estuary SPA	Humber Estuary Ramsar
HES 11: COMMUNITY AND RECREATIONAL FACILITIES IN STRATEGIC HOUSING SITES	<p>The purpose of this policy is to ensure that new proposed strategic development sites are sustainable and meet local need by incorporating community facilities as part of the mix of uses, to support the additional needs of the new residential population. This includes recreational facilities, convenient paths and green spaces to encourage healthy lifestyles.</p> <p>The policy seeks to ensure that the large-scale housing development envisaged through the York Local Plan strategic housing site allocations does not comprise single use development, but includes the mix of uses necessary to support new residents, such as shops, medical, sports and recreational facilities. It encourages provision of dog walking facilities on the strategic development sites.</p> <p>This policy supports the approach in the York Local Plan wherein timely provision of community and recreational facilities is supported on strategic allocations to ensure sustainable sites are delivered with commensurate facilities according to the scale and phasing of development. The provision of recreational facilities particularly encourages on-site recreational behaviour rather than travelling to alternative sites. Recreational pressure is identified through the Local Plan HRA as having a potential</p>	NLSE	NLSE	NLSE	NLSE	NLSE	NLSE	NLSE	NLSE	NLSE

Policy	Policy intention and commentary	European sites								
		Strensall Common SAC	Skipwith Common SAC	River Derwent SAC	Lower Derwent Valley SAC	Lower Derwent SPA	Lower Derwent Valley Ramsar	Humber Estuary SAC	Humber Estuary SPA	Humber Estuary Ramsar
	<p>adverse impact on designated sites. However the appropriate assessment undertaken (HRA, 2019) concludes there is not likely to be adverse effects on integrity, based upon the policies included in the Local Plan and modifications submitted as part of the examination (on 26 March 2019). It is considered that this HPNP policy is in accordance with Local Plan policy and national guidance and therefore through provision of facilities on site, would be positive in discouraging increases in recreational pressure at Designated Sites.</p> <p>This policy approach does not allocate land or specific locations for facilities. Further case-by-case assessment may be required subject to the location and development of sites.</p> <p>Conclusion <i>This policy will not affect the Designated Sites' vulnerabilities and therefore no likely significant effects are anticipated to result from this policy.</i></p>									

Policy	Policy intention and commentary	European sites								
		Strensall Common SAC	Skipwith Common SAC	River Derwent SAC	Lower Derwent Valley SAC	Lower Derwent SPA	Lower Derwent Valley Ramsar	Humber Estuary SAC	Humber Estuary SPA	Humber Estuary Ramsar
HES 12: PURPOSE-BUILT STUDENT HOUSING	<p>This policy expects new purpose-built student residential accommodation to be developed within the University of York campuses and requires any proposed off-campus development to demonstrate specified conditions.</p> <p>It is essential that student accommodation and housing be kept in balance, so that the population mix is not distorted and so that no part of the village becomes predominantly a home for a transitory population.</p> <p>This policy approach does not allocate land or specific locations for student accommodation on either campus. Further case-by-case assessment may be required subject to the location and development of sites. See also individual site assessments for the University Campuses.</p> <p>Conclusion <i>This policy will not affect the Designated Sites' vulnerabilities and therefore no likely significant effects are anticipated to result from this policy.</i></p>	NLSE	NLSE	NLSE	NLSE	NLSE	NLSE	NLSE	NLSE	NLSE

Policy	Policy intention and commentary	European sites								
		Strensall Common SAC	Skipwith Common SAC	River Derwent SAC	Lower Derwent Valley SAC	Lower Derwent SPA	Lower Derwent Valley Ramsar	Humber Estuary SAC	Humber Estuary SPA	Humber Estuary Ramsar
HES 13: LAND WEST OF ELVINGTON LANE	<p>The purpose of this policy is to set out development requirements for the strategic housing site at Land West of Elvington Lane following confirmation of the site’s allocation in the adopted York Local Plan. This policy approach does not allocate land or specific locations for development. Further case-by-case assessment may be required subject to the location and development of sites.</p> <p>Conclusion <i>This policy will not affect the Designated Sites’ vulnerabilities and therefore no likely significant effects are anticipated to result from this policy.</i></p>	NLSE	NLSE	NLSE	NLSE	NLSE	NLSE	NLSE	NLSE	NLSE
HES 14: LAND ADJACENT TO HULL ROAD	<p>The purpose of this policy is to set out development requirements for the strategic housing site at Land Adjacent to Hull Road, following confirmation of the site’s allocation in the adopted York Local Plan. This policy approach does not allocate land or specific locations for development. Further case-by-case assessment may be required subject to the location and development of sites.</p> <p>Conclusion <i>This policy will not affect the Designated Sites’</i></p>	NLSE	NLSE	NLSE	NLSE	NLSE	NLSE	NLSE	NLSE	NLSE

Policy	Policy intention and commentary	European sites								
		Strensall Common SAC	Skipwith Common SAC	River Derwent SAC	Lower Derwent Valley SAC	Lower Derwent SPA	Lower Derwent Valley Ramsar	Humber Estuary SAC	Humber Estuary SPA	Humber Estuary Ramsar
	<i>vulnerabilities and therefore no likely significant effects are anticipated to result from this policy.</i>									
HES 15: LOCAL GREEN SPACE DESIGNATION	<p>The purpose of this policy is to protect the open character and community value of Local Green Space.</p> <p>Designated Local Green Spaces must remain as open community spaces except in very special circumstances.</p> <p>The policy designates spaces as Local Green Spaces. It does allow for small-scale development proposals to support the community use of the space, where they meets all of the following:</p> <ul style="list-style-type: none"> a) The open and green character of Green Space is not compromised; b) They provides facilities to support the community use of space; and c) Community, wildlife, amenity or other values as a Local Green Space are preserved or enhanced. <p>Conclusion <i>This policy will not affect the Designated Sites' vulnerabilities and therefore no likely significant effects are anticipated to result from this policy.</i></p>	NLSE	NLSE	NLSE	NLSE	NLSE	NLSE	NLSE	NLSE	NLSE

Policy	Policy intention and commentary	European sites								
		Strensall Common SAC	Skipwith Common SAC	River Derwent SAC	Lower Derwent Valley SAC	Lower Derwent SPA	Lower Derwent Valley Ramsar	Humber Estuary SAC	Humber Estuary SPA	Humber Estuary Ramsar
HES 16: GREEN INFRASTRUCTURE	<p>The purpose of this policy is to protect and enhance the natural environment of the Neighbourhood Area for current and future generations. It requires that development proposals take particular account of the following:</p> <ul style="list-style-type: none"> a) Local wildlife habitats and protected landscapes, including the Common Land and SSSI. b) Significant green spaces. <p>Development proposals occasioning significant harm to biodiversity will not be supported. Opportunities to incorporate improvements for green infrastructure in and around developments are supported.</p> <p>Conclusion <i>This policy is likely to have a positive effect in seeking to only support development where it is shown to avoid, mitigate and as a last resort, compensate harm to the natural environment of the Neighbourhood Area. As a result of this, it is concluded that no likely significant effects will result from this policy</i></p>	NLSE	NLSE	NLSE	NLSE	NLSE	NLSE	NLSE	NLSE	NLSE

Policy	Policy intention and commentary	European sites								
		Strensall Common SAC	Skipwith Common SAC	River Derwent SAC	Lower Derwent Valley SAC	Lower Derwent SPA	Lower Derwent Valley Ramsar	Humber Estuary SAC	Humber Estuary SPA	Humber Estuary Ramsar
HES 15: SUSTAINABLE TRANSPORT PROVISION	<p>The purpose of this policy is to ensure that development proposals for the new strategic site allocations are supported by a balanced mix of sustainable transport options and do not have an adverse impact on traffic safety and congestion. It seeks to ensure these sites include balanced and sustainable transport provision, such as:</p> <ul style="list-style-type: none"> a) Public transport facilities, including new bus stops; b) A layout providing convenient pedestrian links to footpaths, bus stops and community facilities; c) Strong cycle and pedestrian links on any new access roads to the A64, University and other local major roads. <p>The policy supports preparation of a transport masterplan, where a site is to be developed incrementally, showing links to adjacent sites and the surrounding area.</p> <p>This policy supports the policies set out in the York Local Plan regarding connectivity and does not allocate land for transport development. Likely impacts may result depending on the transport route(s) proposed, which should be assessed in detail at the application stage. Case-by-case</p>	NLSE	NLSE	NLSE	NLSE	NLSE	NLSE	NLSE	NLSE	NLSE

Policy	Policy intention and commentary	European sites								
		Strensall Common SAC	Skipwith Common SAC	River Derwent SAC	Lower Derwent Valley SAC	Lower Derwent SPA	Lower Derwent Valley Ramsar	Humber Estuary SAC	Humber Estuary SPA	Humber Estuary Ramsar
	<p>assessment may be required subject to the location and development of sites.</p> <p>Conclusion <i>This policy will not affect the Designated Sites' vulnerabilities and therefore no likely significant effects are anticipated to result from this policy.</i></p>									
HES 18: PATHS AND OTHER RIGHTS OF WAY	<p>The purpose of this policy is to ensure that development is supported by a balanced mix of sustainable transport and travel options. This policy seeks to protect the existing routes of footpaths, bridleways, cycle paths and byways.</p> <p>It also seeks to ensure that the impacts and the cumulative impacts of adjacent or nearby new strategic developments are carefully considered in relation to preserving the character of the local routes. This policy does not allocate land for development and would become relevant should new development proposals come forward.</p> <p>Conclusion <i>This policy will not affect the Designated Sites' vulnerabilities and therefore no likely significant effects are anticipated to result from this policy.</i></p>	NLSE	NLSE	NLSE	NLSE	NLSE	NLSE	NLSE	NLSE	NLSE

Policy	Policy intention and commentary	European sites								
		Strensall Common SAC	Skipwith Common SAC	River Derwent SAC	Lower Derwent Valley SAC	Lower Derwent SPA	Lower Derwent Valley Ramsar	Humber Estuary SAC	Humber Estuary SPA	Humber Estuary Ramsar
HES 19: UNIVERSITY OF YORK	<p>The purpose of this policy is to support on-campus development which responds positively to specified development principles.</p> <p>The policy seeks ensure the continued development of the University meets outline permissions and good practice standards, whilst ensuring the village identity is not lost.</p> <p>Conclusion <i>This policy will not affect the Designated Sites' vulnerabilities and therefore no likely significant effects are anticipated to result from this policy.</i></p>	NLSE	NLSE	NLSE	NLSE	NLSE	NLSE	NLSE	NLSE	NLSE

Policy	Policy intention and commentary	European sites								
		Strensall Common SAC	Skipwith Common SAC	River Derwent SAC	Lower Derwent Valley SAC	Lower Derwent SPA	Lower Derwent Valley Ramsar	Humber Estuary SAC	Humber Estuary SPA	Humber Estuary Ramsar
HES 20: UNIVERSITY OF YORK EXPANSION	<p>The purpose of this policy is to set out development requirements, in respect of vehicular transport access and cycling/pedestrian provision along rural lanes serving the village, for the University of York Expansion Site, following confirmation of the site’s allocation in the adopted York Local Plan.</p> <p>This policy approach does not allocate land or specific locations for development. Further case-by-case assessment may be required subject to the location and development of sites.</p> <p>Conclusion <i>This policy will not affect the Designated Sites’ vulnerabilities and therefore no likely significant effects are anticipated to result from this policy.</i></p>	NLSE	NLSE	NLSE	NLSE	NLSE	NLSE	NLSE	NLSE	NLSE

Part 2 Cumulative effects of the Neighbourhood Plan

- 3.2 It is necessary to understand whether the HPNP is likely to have significant effects in combination with other relevant plans or programmes.
- 3.3 It is most likely that in-combination effects will occur with strategic plans in place in York and adjacent authorities. The table below provides an assessment of any likely significant effects of each Neighbourhood Plan policy on the European Designated Sites in-combination with the adopted City of York (CYC) Local Plan, and emerging Harrogate and Selby Local Plans.

Plan/ Programme	Comments	Impact
<p>City of York Local Plan</p>	<p>CYC Local Plan sets out the policies and site allocations to meet the city’s needs over the next 20 years. A Local Plan Publication draft (2014) was halted from going to consultation following decision of Members at Full Council (October 2014) to undertake further work in relation to housing demand. Subsequently, the Local Plan underwent a Preferred Sites Consultation (2016), Pre-Publication Consultation (Regulation 18) Consultation (2017) and its final Publication (Regulation 19) consultation from 21st February – 4th April 2018. The Local Plan was submitted to the Secretary of State for independent examination on 25th May 2018. The plan includes policies on housing, employment, recreation, biodiversity and transport. CYC Local Plan was adopted in February 2025.</p> <p>A Local Plan HRA dated April 2018 was submitted alongside the York Draft Local Plan for examination. This version of the HRA takes forward several issues to Appropriate Assessment (AA). The issues included:</p> <ul style="list-style-type: none"> • recreational pressure, change to the hydrological regime and the effect of air pollution on Strensall Common SAC • recreational pressure at the Lower Derwent Valley SPA and the impacts on the bird communities that also utilise land beyond the European site. <p>Appropriate Assessment concluded that City of York Council could ascertain that there would be no adverse effect on the integrity of Strensall Common in terms of air pollution and effects in the aquatic environment without the need for further mitigation, other than mitigation in relation to recreational pressure provided for by minor modification to clarify wording to Local Plan Policies SS13, SS18, SS19 and EC1. There were no residual effects and no need for an in-combination assessment. However, following correspondence from Natural England in June 2018 in relation to evidencing the potential for recreational pressure at European designated sites as a result of growth proposed in the Plan, City of York Council commissioned two visitor surveys, one for Strensall Common (SAC) and a second for the Lower Derwent Valley (SPA) and Skipwith Common (SAC).</p>	<p>NLSE</p>

	<p>Most relevant to the HPNP are the survey results in relation to the Lower Derwent Valley, which is the closest European designated site to the neighbourhood plan area. The report considers that the closest points of open access on to the LDV from York are well managed and likely to attract people specifically interested in wildlife. Although the report states that there is likely to be significant effects from development, there is mitigation presented in the report. This is deemed sufficient to rule out adverse effects on the integrity with respect to recreation for any single development alone, unless within 1km. It is also able to rule out adverse effects on the integrity, in relation to recreational pressure, for the quantum of development as a whole (in-combination). The report considers that monitoring and review should be included within the plan. The outcomes of this report concur with the conclusions in the submitted HRA for the Local Plan.</p> <p>However, the results of the Strensall Common visitor survey concluded a 24% uplift in recreational pressure as a result of proposed development within close proximity to the site. Consequently, the revised Habitat Regulation Assessment (2019), which takes account of the survey results, concluded that two sites should be removed from the plan in order to avoid adverse effects on the integrity of the Common; Site ST35: Queen Elizabeth Barracks, Strensall and Site H59: Howard Road, Strensall. Proposed modifications to the York Local Plan, including the removal of these sites, were considered by Executive on 7 March 2019 wherein Executive Members approved their submission for consideration by the Planning Inspectors examining the York Local Plan.</p> <p>In February 2025, the York Local Plan was adopted. The changes at Strensall do not impact the HPNP directly, although HRA concerns around recreational pressure are very similar.</p> <p>The policies set out in the HPNP are consistent with the adopted York Local Plan policy at the neighbourhood level. For example, policies in relation to Green Infrastructure accord with strategic policies set out in the York Local Plan but add detail at the neighbourhood level.</p> <p>The social, community, economic and environmental benefits of Heslington’s green infrastructure help make the Parish environmentally sustainable. The policies in this section aim to protect and enhance the green infrastructure for current and future generations.</p> <p>Conclusion <i>It is therefore concluded that there are not likely to be any significant effects to the European Designated Sites as a result of in-combination effects between the adopted York Local Plan and HPNP at this stage.</i></p>	
<p>Harrogate District Local Plan</p>	<p>The former Harrogate Borough Council adopted it’s Harrogate District Local Plan in December 2020. It sets out strategic policies and allocations, including options for a settlement. The</p>	<p>NLSE</p>

	<p>publication Draft was accompanied by an HRA (January 2018) that did not identify likely significant impacts as a result of the draft strategy (subsequently confirmed) on any of the European sites identified in this report.</p> <p>One of the options for a new settlement is at Green Hammerton along the A59 which is approximately 20km from the boundary of the Heslington Parish Neighbourhood area. It is unlikely that there would be in-combination significant effects as a result of this on the sites identified due to proximity.</p> <p>Conclusion <i>It is therefore concluded that there are not likely to be any significant effects to the European Designated Sites as a result of in-combination effects between the Harrogate District Local Plan and HPNP at this stage.</i></p>	
<p>Selby Local Plan</p>	<p>The former Selby District Council (SDC) adopted its Core Strategy in October 2013. This set out their strategic ambitions, policies and strategic development sites. Several of the policies of the Submission Draft Core Strategy were identified at the screening stage to have the potential to affect <i>Natura 2000</i> sites. The designations potentially affected were:</p> <ul style="list-style-type: none"> • The Lower Derwent Valley SAC, Ramsar and SPA designations • Skipwith Common SAC • The Humber Estuary SAC, Ramsar and SPA designations <p>The potential impacts arising from the Core Strategy were identified as being:</p> <ul style="list-style-type: none"> • An increase in housing allocations situated within 5km which could lead to increased visitor pressure to countryside sites including those covered by the <i>Natura 2000</i> designations listed above • An increase in economic activities that would encourage tourism generally and hence have the potential to indirectly result in increased visitor pressure to countryside sites, including the sites covered by the <i>Natura 2000</i> designations listed above • If wind energy sites are encouraged (as per CP14) and are situated in areas where they could affect bird populations, which are designated features of the above <i>Natura 2000</i> sites, this may have the potential to result in adverse effects. <p>It was concluded that the strategy was unlikely to have significant adverse effects on the issues raised above as a result of policy amendments made and it was considered unlikely that a large increase in numbers would visit the sites from the new housing and economic growth. Further work was recommended in relation to visitor survey at the Lower Derwent Valley for the purposes of future monitoring of recreational pressure.</p> <p>The new North Yorkshire Council (NYC) are currently working towards a new Selby District Local Plan (SDLP) which will set out their detailed portfolio of sites for development. A HRA was undertaken on the Regulation 18 Selby Local Plan in January 2021. It concluded as follows:-</p> <p>7.1 This HRA discussed potential implications of the SLP on</p>	<p>NLSE</p>

	<p>European sites within Selby District and up to 10km from the authority boundary. Several impact pathways were identified to be relevant to the SLP, including recreational pressure, loss of functionally linked habitat, water quality, water quantity, level and flow, and atmospheric pollution. At the LSEs stage, all impact pathways were taken forward to Appropriate Assessment, for a more detailed appraisal of potential effects on European sites. Due to an absence of LSEs, the Kirk Deighton SAC, the Thorne & Hatfield Moors SPA and the Thorne Moor SAC were excluded from Appropriate Assessment. The following paragraphs summarise the main conclusions and recommendations arising from work carried out in the Appropriate Assessment.</p> <p><u>Recreational Pressure Lower Derwent Valley SPA / Ramsar / SAC and the Skipwith Common SAC</u></p> <p>7.2 It was determined that the SLP would lead to a relatively small amount of growth (226 dwellings) within 5km of the SPA / Ramsar / SAC, with most housing lying beyond easy walking distance. The access point to the European site most relevant to Selby District was least busy in Footprint Ecology’s visitor survey (no visitors were recorded over 16 hours of surveying). Overall, given this evidence, it was concluded that the emerging SLP will not result in adverse effects on the site integrity of the Lower Derwent Valley SPA / Ramsar / SAC regarding recreational pressure. No policy mitigation measures are recommended for the next iteration of the SLP.</p> <p>7.3 Furthermore, the SLP provides for 354 dwellings within 4km of the Skipwith Common SAC, the distance beyond which visitors reduce significantly. This represents a 4.8% increase on the 3,814 dwellings reported by Footprint Ecology in this distance band. Extrapolating from the 9 visitors that were interviewed from the first 4km distance bands, this would be expected to lead to only one additional interviewee in the SAC. It was determined that such an increase is very small and unlikely to result in adverse effects on the heathland habitats within the SAC, even in-combination with the growth in adjoining authorities. Therefore, it was concluded that the emerging SLP will not lead to adverse effects on the integrity of the Skipwith Common SAC regarding recreational pressure, either alone or in-combination. No policy mitigation measures are recommended for the next iteration of the SLP.</p> <p>7.4 Notwithstanding these conclusions, the increasing residential growth in authorities adjoining the SPA / Ramsar (including Selby District) does mean that recreational pressure is important to keep being monitored in the event that any mitigation may need introducing in the future, since 5 year plan reviews may well result in further increases in planned housing. Therefore, to ensure that the integrity of the Lower Derwent Valley SPA / Ramsar / SAC and the Skipwith Common SAC is maintained in the long-term, it is recommended that visitor monitoring in these sites is undertaken every five years. This could be completed as a joint exercise between the authorities of Selby, City of York and the East Riding of Yorkshire. The results would then be taken into account in the 5-yearly Local Plan reviews.</p>	
--	---	--

	<p><u>Loss of Functionally Linked Habitat Lower Derwent Valley SPA / Ramsar and the Humber Estuary SPA / Ramsar</u></p> <p>7.5 The Appropriate Assessment indicated that several of the residential and employment sites allocated in the SLP lie within the maximum foraging distances of Bewick's swans and golden plover, qualifying species of nearby European sites such as the Lower Derwent Valley SPA / Ramsar and the Humber Estuary SPA / Ramsar. Furthermore, sites comprise suitable foraging habitat and are sufficiently large to be potentially linked to European sites. While the SLP already Habitats Regulations Assessment of the Selby Local Plan Project number: 60618556 Prepared for: Selby District Council AECOM 76 requires for proportionate ecological assessments, AECOM recommends that further wording requiring the need for overwintering bird surveys is included in the next iteration of the plan to provide further specificity. At present, adverse effects (without mitigation) arising from some of the sites allocated in the SLP cannot be excluded, particularly in relation to the Lower Derwent Valley SPA / Ramsar.</p> <p>7.6 Therefore, it is recommended that the following text (or similar) is inserted into the next iteration of the SLP: 'To meet the requirements of the Habitats Directive, developers should provide evidence that relevant proposals will not result in adverse effects on qualifying bird populations of the Lower Derwent Valley SPA / Ramsar regarding the loss of functionally linked habitat. Therefore, a survey of the current site usage (if any) of overwintering SPA / Ramsar bird species will be required at the planning application stage to assess if the land parcel supports a significant population (typically defined as 1% of the qualifying population) of designated bird species. These non-breeding bird surveys will need to be undertaken during autumn, winter and spring. If site allocations or directly adjacent land are identified to be functionally linked to the SPA / Ramsar, avoidance measures and mitigation will be required, and the planning application will need to be assessed through a project specific Habitats Regulations Assessment to ensure that the development does not result in adverse effects on site integrity.'</p> <p>7.7 It is acknowledged that this text is too long to be contained in a policy. Therefore, the issue of functionally linked habitat loss should be acknowledged in Preferred Approach NE4 (Protecting Designated Sites and Species) and it is recommended that the above paragraph is included in the supporting text of that policy. Provided that this wording (or an appropriate alternative) is inserted to the next iteration of the SLP, adverse effects on the integrity of the Lower Derwent Valley SPA / Ramsar can be excluded.</p> <p><u>Water Quality River Derwent SAC, Lower Derwent Valley SPA / Ramsar and Humber Estuary SPA / Ramsar</u></p> <p>7.8 The qualifying habitats and species of the River Derwent SAC, the Lower Derwent Valley SPA / Ramsar and the Humber Estuary SPA / Ramsar are sensitive to negative changes in water quality, particularly the discharge of phosphorus in wastewater. Potential sources of phosphorus from development sites include surface runoff from impermeable surfaces and leaking / overflowing</p>	
--	--	--

	<p>Package Treatment Plants (PTPs), as well as treated sewage effluent from Wastewater Treatment Works (WwTWs).</p> <p>7.9 Given the proximity of the residential allocations in Hemingbrough and North Duffield to the River Derwent Valley SPA / Ramsar, AECOM recommends that a presumption against private sewage treatment facilities in sewerred areas is included in the next iteration of the SLP. If new developments must be served by private sewage treatment solutions, the best available technology should be used to minimise any potential discharge of phosphorus.</p> <p>7.10 Regarding the discharge of treated sewage effluent, by far the most important contributor of these sources to phosphorus loading in freshwater systems, AECOM has contacted Yorkshire Water (the sewage treatment provider for Selby District) to determine whether there is remaining headroom in WwTWs discharging into the Rivers Derwent and Ouse to accommodate the growth anticipated in Selby District. If this is confirmed to be the case, adverse effects on the integrity of the River Derwent SAC can be excluded. If sufficient headroom is unavailable, additional policy wording will be recommended for insertion into the SLP. This would include a requirement for phasing developments, particularly in the larger site allocations, to keep pace with the available headroom at identified WwTWs. It will need to be confirmed that sewage treatment capacity is available, before any residential dwellings can become occupied. Habitats Regulations Assessment of the Selby Local Plan Project number: 60618556 Prepared for: Selby District Council AECOM 77</p> <p><u>Atmospheric Pollution Lower Derwent Valley SAC</u></p> <p>7.11 The lowland hay meadows in the Lower Derwent Valley SAC are sensitive to atmospheric pollution. The Appropriate Assessment determined that the A163, a likely commuter route between the East Riding of Yorkshire and Selby District, bisects the SAC and could lead to an increase in nitrogen deposition in sensitive habitats.</p> <p>7.12 In the first instance, AECOM identified a road link along the A163 with sensitive lowland hay meadow habitat along its northern and southern boundary. A transport modelling exercise is being undertaken, in order to model 24hr two-way AADT, average vehicle speeds and percentage heavy goods vehicles (HGVs) for Baseline, Do Minimum and Do Something growth scenarios. If any increase in AADT is negligible (i.e. in the low double numbers), there will be no adverse effects on site integrity. If the increase in AADT is anything other than nugatory, an Air Quality Impact Assessment (AQIA) modelling nitrogen deposition rates at identified transects along the A163 will be required.</p> <p>7.13 Until results of the traffic modelling are received and a decision on the potential requirement of AQIA is made, adverse in-combination effects on the integrity of the Lower Derwent Valley SAC cannot be excluded. This impact pathway will be revisited for an update to this HRA report as new evidence becomes available.</p>	
--	---	--

	<p>Conclusion <i>Based on the above key findings/conclusions, it is concluded that there are not likely to be that significant effects to the European Designated Sites as a result of in- combination effects between the Selby Local Plan and the HPNP at this stage.</i></p>	
<p>Joint Minerals and Waste Local Plan</p>	<p>North Yorkshire County Council, the City of York Council and the North York Moors National Park Authority worked together to prepare a Joint Minerals and Waste Plan (JMWP) to provide for minerals and waste developments up to 2030. This plan covers the whole of the HPNP area. The October 2016 Habitat Regulations Assessment on the Publication Plan concluded:-</p> <p>“Broadly this Habitats Regulations Assessment has found that the Joint Plan is consistent with the Habitats Regulations. However, a small amount of cumulative uncertainty was reported in relation to one policy, while 4 other policies were identified as having the potential for further enhancement through precautionary mitigation. To address these issues recommendations were set out in section 7. Incorporating this mitigation into the Joint Plan would ensure that it is consistent with the Habitats Regulations.”</p> <p>Following examination, the plan was adopted by the preparing authorities in February, April and March 2022 respectively.</p> <p>Conclusion <i>It is therefore concluded that there are not likely to be any significant effects to the European Designated Sites as a result of in-combination effects between the JMWP and HPNP at this stage.</i></p>	<p>NLSE</p>

4. Consultation

- 4.1 Consultation is an important part of the HRA process to ensure that the process is robust and supports the plan development process.
- 4.2 The HRA Screening Report for the first version Pre-Submission HPNP was subject to consultation with Natural England, the Environment Agency, Historic England, CYC and the neighbouring former authorities of East Riding of Yorkshire Council and Harrogate Borough Council, as several of the identified Designated Sites lay within their authorities. The responses received through consultation and issues raised were addressed in finalising the initial HPNP HRA.
- 4.3 Natural England's response to the draft HPNP HRA highlighted the complexity of producing a Neighbourhood Plan with proposed strategic allocations within the plan area as included in the Local Plan (2018). This was raised particularly in relation to ST15: Land to the West of Elvington Lane and its impact on the Heslington Tillmire SSSI and Lower Derwent Valley SPA. On this basis Natural England recommended that *"the Neighbourhood Plan could proceed if it focuses on setting out Development Management policies for shaping whatever comes forward in the Neighbourhood Plan and is clear that it is not promoting the site[s] in any way. In this case no assessment of the site[s] would be necessary. However, it would still be prudent to review the Neighbourhood Plan when the Local Plan is adopted."*
- 4.4 The HPNP took into consideration the comments by Natural England and included explanatory text to ensure it is clear that the HPNP is seeking to shape development within the Parish as opposed to allocating any sites for development.

NOTE:

The Heslington Parish Neighbourhood Plan does not allocate land for housing or other forms of development and does not amend or introduce defined Limits to Development.

- 4.5 Following consultation on the emerging Local Plan, City of York Council also published and submitted to their Planning Inspector a revised Habitat Regulation Assessment³. The initial HPNP HRA Screening Report was updated to take account of the revised CYC Assessment.
- 4.6 Following the parish council's withdrawal of its originally submitted Neighbourhood Plan and subsequent amendment and updating, the current draft 2nd version Pre-Submission Plan is now the subject of this updated and amended screening report which is now subject to further consultation with Natural England, the Environment Agency, Historic England and the new North Yorkshire Council, which replaced all North Yorkshire district authorities on 1st April 2023.
- 4.7 Neighbourhood planning documents sent out to consultation may be viewed via CYC Neighbourhood Plan webpage: www.york.gov.uk/neighbourhoodplanning.
- 4.8 All previous HPNP documents which have been consulted on can be found at: <https://www.heslington.org.uk/neighbourhood-plan/>

5. Conclusion

- 5.1 On the basis of the Heslington Parish Neighbourhood Plan Habitats Regulation Screening Assessment the conclusion is that there are not likely to be significant (adverse) effects as a result of the Plan and that it is not necessary to continue to the next stage of the HRA process, an Appropriate Assessment.
- 5.2 The main reasons for this are:
- a) Section 3 of this report ascertains that none of the policies in the HPNP are identified to have likely significant impacts on the European Designated Sites within 15km of the HPNP area; and
 - b) The report also identifies that no cumulative effects as a result of this plan are identified.
- 5.3 For the avoidance of doubt, it is confirmed that the HPNP is not seeking to allocate sites and has updated the HRA Screening Report in line with guidance from CYC.

Annex 1: European Designated Sites Qualifying Features and Conservation Objectives

Strensall Common SAC Site size: 569.63 ha Source: http://publications.naturalengland.org.uk/publication/6310049894891520?category=5758332488908800		Site Ref: UK0030284
Qualifying Features/Habitats	Site Description	Conservation Objectives
<p>The site is designated under article 4(4) of the Directive (92/43/EEC) as it hosts the following habitats listed in Annex I:</p> <ul style="list-style-type: none"> • H4030: European dry heaths. • H4010: Northern Atlantic wet heaths with <i>Erica tetralix</i> (wet heathland with cross-leaved heath). 	<p>Strensall Common is an example of acidic lowland heath represented predominantly by <i>Erica tetralix</i> – <i>Sphagnum compactum</i> wet heath, although its extent has been reduced by drainage. It is a noted locality for marsh gentian <i>Gentiana pneumonanthe</i>, narrow buckler-fern <i>Dryopteris carthusiana</i> and the dark-bordered beauty moth <i>Epione vespertaria</i> as it is associated with creeping willow <i>Salix repens</i> on the wet heath.</p> <p>There is also a complex mosaic of wet heaths with <i>Erica tetralix</i> and dry heath elements. The <i>Calluna vulgaris</i> – <i>Deschampsia flexuosa</i> dry heath is noted for petty whin <i>Genista anglica</i> and bird's-foot <i>Ornithopus perpusillus</i>.</p>	<p>With regard to the SAC and the natural habitats and/or species for which the site has been designated (the 'Qualifying Features' listed below), and subject to natural change;</p> <p>Ensure that the integrity of the site is maintained or restored as appropriate, and ensure that the site contributes to achieving the Favourable Conservation Status of its Qualifying Features, by maintaining or restoring;</p> <ul style="list-style-type: none"> • The extent and distribution of the qualifying natural habitats • The structure and function (including typical species) of the qualifying natural habitats, and, • The supporting processes on which the qualifying natural habitats rely <p>This document should be read in conjunction with the accompanying <i>Supplementary Advice</i> document, which provides more detailed advice.</p>

Constituent SSSIs:

Strensall Common

Area: 578.75 ha

Condition:

	% meeting area of favourable or unfavourable recovering	Favourable	Unfavourable - Recovering	Unfavourable - No change	Unfavourable - Declining	Partially destroyed	Destroyed	Not Assessed
Area (ha)	572.80	184.51	388.28					
Percentage	100.00%	32.21%	67.79%	0.00%	0.00%	0.00%	0.00%	0.00%

<p>Skipwith Common SAC</p> <p>Site Size: 29.2ha</p> <p>Source: http://publications.naturalengland.org.uk/publication/5391567648980992?category=5758332488908800</p>		<p>Site Ref: UK0030276</p>
Qualifying Features/Habitats	Site Description	Conservation Objectives
<p>The site is designated under article 4(4) of the Directive (92/43/EEC) as it hosts the following habitats listed in Annex I:</p> <ul style="list-style-type: none"> • European dry heaths • Northern Atlantic wet heaths with <i>Erica tetralix</i>. (Wet heathland with cross-leaved heath) 	<p>The wet heath at Skipwith Common is the most extensive of its type in the north of England. The <i>Erica tetralix</i> – <i>Sphagnum compactum</i> community is dominated by cross-leaved heath <i>Erica tetralix</i> and purple moor-grass <i>Molinia caerulea</i>. There is a small population of marsh gentian <i>Gentiana pneumonanthe</i>. The wet heath is part of transitions from open water, fen, reed and swamp to dry heaths and other habitats. The dry heath element is a representative of <i>Calluna vulgaris</i> – <i>Deschampsia flexuosa</i> heath dominated by heather <i>Calluna vulgaris</i>.</p>	<p>With regard to the SAC and the natural habitats and/or species for which the site has been designated (the ‘Qualifying Features’ listed below), and subject to natural change; Ensure that the integrity of the site is maintained or restored as appropriate, and ensure that the site contributes to achieving the Favourable Conservation Status of its Qualifying Features, by maintaining or restoring;</p> <ul style="list-style-type: none"> • The extent and distribution of the qualifying natural habitats • The structure and function (including typical species) of the qualifying natural habitats and, • The supporting processes on which the qualifying natural habitats rely <p>This document should be read in conjunction with the accompanying <i>Supplementary Advice</i> document, which provides more detailed advice and information to enable the application and achievement of the Objectives set out above.</p>

Constituent SSSIs:

Skipwith Common

Area: 295.3 ha

Condition:

Source:

<https://designatedsites.naturalengland.org.uk/ReportUnitCondition.aspx?SiteCode=S1003243&ReportTitle=Skipwith%20Common%20SSSI>

	% meeting area of favourable or unfavourable recovering	Favourable	Unfavourable - Recovering	Unfavourable - No change	Unfavourable - Declining	Partially destroyed	Destroyed	Not Assessed
Area (ha)	295.3	141.6	153.7					
Percentage	100.00%	47.96%	52.04%	0.00%	0.00%	0.00%	0.00%	0.00%

River Derwent SAC Site Size: 411.23 ha Source: http://publications.naturalengland.org.uk/publication/4824082210095104?category=5758332488908800		Site Ref: UK0030253
Qualifying Features/Habitats	Site Description	Conservation Objectives
<p>Qualifying habitats: The site is designated under article 4(4) of the Directive (92/43/EEC) as it hosts the following habitats listed in Annex I:</p> <ul style="list-style-type: none"> • Water courses of plain to montane levels with the <i>Ranunculion fluitantis</i> and <i>Callitriche-Batrachion</i> vegetation. (Rivers with floating vegetation often dominated by water-crowfoot) <p>Qualifying species: The site is designated under article 4(4) of the Directive (92/43/EEC) as it hosts the following species listed in Annex II:</p> <ul style="list-style-type: none"> • Bullhead <i>Cottus gobio</i> • River lamprey <i>Lampetra fluviatilis</i> • Otter <i>Lutra lutra</i> • Sea lamprey <i>Petromyzon marinus</i> 	<p>The Yorkshire Derwent is considered to represent one of the best British examples of the classic river profile.</p> <p>This lowland section, stretching from Ryemouth to the confluence with the Ouse, supports diverse communities of aquatic flora and fauna. Fed from an extensive upland catchment, the lowland course of the Derwent has been considerably diverted and extended as a result of glacial action in the Vale of Pickering.</p> <p>The river supports an aquatic flora uncommon in Northern Britain. Several species, including river water-dropwort <i>Oenanthe fluviatilis</i>, flowering rush <i>Butomus umbellatus</i>, shining pondweed <i>Potamogeton lucens</i>, arrowhead <i>Sagittaria sagittifolia</i>, opposite-leaved pondweed <i>Groenlandia densa</i> and narrow-leaved water-parsnip <i>Berula erecta</i> are more typically found in lowland rivers in southern England.</p> <p>The Derwent is noted for the diversity of its fish communities, which include river <i>Lampetra fluviatilis</i> and sea lampreys <i>Petromyzon marinus</i> populations that spawn in the lower reaches, as</p>	<p>With regard to the SAC and the natural habitats and/or species for which the site has been designated (the 'Qualifying Features' listed below), and subject to natural change; Ensure that the integrity of the site is maintained or restored as appropriate, and ensure that the site contributes to achieving the Favourable Conservation Status of its Qualifying Features, by maintaining or restoring;</p> <ul style="list-style-type: none"> • The extent and distribution of qualifying natural habitats and habitats of qualifying species • The structure and function (including typical species) of qualifying natural habitats • The structure and function of the habitats of qualifying species • The supporting processes on which qualifying natural habitats and the

	<p>well as bullhead <i>Cottus gobio</i>. The diverse habitats also support otters <i>Lutra lutra</i>.</p>	<p>habitats of qualifying species rely</p> <ul style="list-style-type: none"> • The populations of qualifying species and, <p>The distribution of qualifying species within the site. This document should be read in conjunction with the accompanying <i>Supplementary Advice</i> document, which provides more detailed advice and information to enable the application and achievement of the Objectives set out above.</p>
--	---	---

Constituent SSSIs:

River Derwent SSSI

Area: 407.84 ha

	% meeting area of favourable or unfavourable recovering	Favourable	Unfavourable - Recovering	Unfavourable - No change	Unfavourable - Declining	Partially destroyed	Destroyed	Not Assessed
Area (ha)	406.24	25.72	380.53	1.60				
Percentage	99.61%	6.31%	93.30%	0.39%	0.00%	0.00%	0.00%	0.00%

Lower Derwent SAC Site Size: 915.91 ha Source: http://publications.naturalengland.org.uk/publication/5660734323163136?category=5758332488908800		Site Ref: UK0012844
Qualifying Features/Habitats	Site Description	Conservation Objectives
<p>Qualifying habitats: The site is designated under article 4(4) of the Directive (92/43/EEC) as it hosts the following habitats listed in Annex I:</p> <ul style="list-style-type: none"> • Alluvial forests with <i>Alnus glutinosa</i> and <i>Fraxinus excelsior</i> (<i>Alno-Padion</i>, <i>Alnion incanae</i>, <i>Salicion albae</i>). (Alder woodland on floodplains)* • Lowland hay meadows (<i>Alopecurus pratensis</i>, <i>Sanguisorba officinalis</i>). <p>Qualifying species: The site is designated under article 4(4) of the Directive (92/43/EEC) as it hosts the following species listed in Annex II:</p> <ul style="list-style-type: none"> • Otter <i>Lutra lutra</i> <p>Annex I priority habitats are denoted by an asterisk (*).</p>	<p>The Lower Derwent Valley contains a greater area of high-quality examples of lowland hay meadows than any other UK site and encompasses the majority of this habitat type occurring in the Vale of York. The abundance of the rare narrow- leaved water-dropwort <i>Oenanthe silaifolia</i> is a notable feature. Traditional management has ensured that ecological variation is well-developed, particularly in the transitions between this grassland type and other types of wet and dry grassland, swamp and fen vegetation. Additionally there is an area of damp alder woodland at Thornton Ellers adjoining marsh and tall fen communities.</p>	<p>With regard to the SAC and the natural habitats and/or species for which the site has been designated (the 'Qualifying Features' listed below), and subject to natural change;</p> <p>Ensure that the integrity of the site is maintained or restored as appropriate, and ensure that the site contributes to achieving the Favourable Conservation Status of its Qualifying Features, by maintaining or restoring;</p> <ul style="list-style-type: none"> • The extent and distribution of qualifying natural habitats and habitats of qualifying species • The structure and function (including typical species) of qualifying natural habitats • The structure and function of the habitats of qualifying species • The supporting processes on which qualifying natural habitats and the habitats of qualifying species rely • The populations of qualifying species, and, • The distribution of qualifying species within the site. <p>This document should be read in conjunction with the accompanying <i>Supplementary Advice</i> document, which provides more detailed advice and information to enable the application and achievement of the Objectives set out above.</p>

Lower Derwent SPA		Site Ref: UK9006092
Source: http://publications.naturalengland.org.uk/publication/5660734323163136?category=5758332488908800		
Qualifying Features/Habitats	Site Description	Conservation Objectives
<ul style="list-style-type: none"> • A037 <i>Cygnus columbianus bewickii</i>; Bewick's swan (Non-breeding) • A050 <i>Anas penelope</i>; Eurasian wigeon (Non-breeding) • A052 <i>Anas crecca</i>; Eurasian teal (Non-breeding) • A056 <i>Anas clypeata</i>; Northern shoveler (Breeding) • A140 <i>Pluvialis apricaria</i>; European golden plover (Non-breeding) • A151 <i>Philomachus pugnax</i>; Ruff (Non-breeding) • Waterbird assemblage 	<p>The Lower Derwent Valley covers an area of 1089.4ha and consists of extensive areas of traditionally managed species rich, alluvial flood meadow of a kind now restricted in the UK.</p> <p>The boundaries of the SPA are coincident with the constituent SSSIs apart from the exclusion of the sections of the River Derwent SSSI north of Newton Mask SSSI and south of Brighton Meadows SSSI.</p> <p>The site qualifies under Article 4.1 by regularly supporting nationally important winter numbers of the Annex 1 species: <i>Cygnus columbianus bewickii</i>; Bewick's swan; A140 <i>Pluvialis apricaria</i>; European golden plover (Non-breeding); A151 <i>Philomachus pugnax</i>; Ruff (Non-breeding).</p> <p>The site qualifies under Article 4.2 for regularly supporting breeding population of <i>Anas clypeata</i>; Northern shoveler (Breeding).</p> <p>The site qualifies under Article 4.2 as an area for of international importance to waterfowl by regularly supporting over 20,000 waterfowl in winter, including <i>Anas penelope</i>; Eurasian wigeon (Non-breeding) and <i>Anas crecca</i>; Eurasian teal (Non-breeding). The site also supports nationally important migratory species.</p>	<p>With regard to the SPA and the individual species and/or assemblage of species for which the site has been classified (the 'Qualifying Features' listed below), and subject to natural change; Ensure that the integrity of the site is maintained or restored as appropriate, and ensure that the site contributes to achieving the aims of the Wild Birds Directive, by maintaining or restoring;</p> <ul style="list-style-type: none"> • The extent and distribution of the habitats of the qualifying features • The structure and function of the habitats of the qualifying features • The supporting processes on which the habitats of the qualifying features rely • The population of each of the qualifying features, and, • The distribution of the qualifying features within the site.

This document should be read in conjunction with the accompanying *Supplementary Advice* document, which provides more detailed advice and information to enable the application and achievement of the Objectives set out above.

Constituent SSSIs:

Derwent Ings SSSI

Area: 666.18ha

Condition:

	% meeting area of favourable or unfavourable recovering	Favourable	Unfavourable - Recovering	Unfavourable - No change	Unfavourable - Declining	Partially destroyed	Destroyed	Not Assessed
Area (ha)	666.18	397.68	268.50					
Percentage	100.00%	59.70%	40.30%	0.00%	0.00%	0.00%	0.00%	0.00%

Brighton Meadows SSSI

Area: 38.39 ha

Condition:

	% meeting area of favourable or unfavourable recovering	Favourable	Unfavourable - Recovering	Unfavourable - No change	Unfavourable - Declining	Partially destroyed	Destroyed	Not Assessed
Area (ha)	38.39	35.65	2.74					
Percentage	100.00%	92.86%	7.14%	0.00%	0.00%	0.00%	0.00%	0.00%

Melbourne and Thornton Ings SSSI

Area: 200.37 ha

Condition:

	% meeting area of favourable or unfavourable recovering	Favourable	Unfavourable - Recovering	Unfavourable - No change	Unfavourable - Declining	Partially destroyed	Destroyed	Not Assessed
Area (ha)	200.37	84.58	115.79					
Percentage	100.00%	42.21%	57.79%	0.00%	0.00%	0.00%	0.00%	0.00%

Heslington Parish Neighbourhood Plan Habitats Regulation Screening Report

Newton Mask SSSI								
Area: 17.78 ha Condition:								
	% meeting area of favourable or unfavourable recovering	Favourable	Unfavourable - Recovering	Unfavourable - No change	Unfavourable - Declining	Partially destroyed	Destroyed	Not Assessed
Area (ha)	17.78	17.78						
Percentage	100.00%	100.00%	0.00%	0.00%	0.00%	0.00%	0.00%	0.00%

<p>Humber Estuary SAC</p> <p>Site size: 36,657.15 ha</p> <p>Source: http://publications.naturalengland.org.uk/publication/5009545743040512?category=5758332488908800</p>		<p>Site Ref: UK00300170</p>
Qualifying Features/Habitats	Site Description	Conservation Objectives
<p>Qualifying habitats: The site is designated under article 4(4) of the Directive (92/43/EEC) as it hosts the following habitats listed in Annex I:</p> <ul style="list-style-type: none"> • Atlantic salt meadows (<i>Glauco-Puccinellietalia maritimae</i>) • Coastal lagoons* • Dunes with <i>Hippophae rhamnoides</i> • Embryonic shifting dunes • Estuaries • Mudflats and sandflats not covered by seawater at low tide • Fixed dunes with herbaceous vegetation ('grey dunes')* • <i>Salicornia</i> and other annuals colonising mud and sand • Sandbanks which are slightly covered by sea water all the time • Shifting dunes along the shoreline with <i>Ammophila arenaria</i> ('white dunes') 	<p>The Humber is the second largest coastal plain Estuary in the UK, and the largest coastal plain estuary on the east coast of Britain. The estuary supports a full range of saline conditions from the open coast to the limit of saline intrusion on the tidal rivers of the Ouse and Trent. The range of salinity, substrate and exposure to wave action influences the estuarine habitats and the range of species that utilise them; these include a breeding bird assemblage, winter and passage waterfowl, river and sea lamprey, grey seals, vascular plants and invertebrates. The Humber is a muddy, macro-tidal estuary, fed by a number of rivers including the Rivers Ouse, Trent and Hull. Suspended sediment concentrations are high, and are derived from a variety of sources, including marine sediments and eroding boulder clay along the Holderness coast. This is the northernmost of the English east coast estuaries whose structure and function is intimately linked with soft eroding shorelines. The extensive mud and sand flats support a range of benthic communities, which in turn are an important feeding resource for birds and fish. Wave exposed sandy shores are found in the outer/open coast areas of the estuary. These change to the more moderately exposed sandy shores and then to sheltered muddy shores within the main body of the estuary and up into the tidal rivers. Habitats within the Humber Estuary include Atlantic salt meadows and a range of sand dune types in the outer estuary, together with</p>	<p>With regard to the natural habitats and/or species for which the site has been designated (the 'Qualifying Features' listed below), and subject to natural change; Ensure that the integrity of the site is maintained or restored as appropriate, and ensure that the site contributes to achieving the Favourable Conservation Status of its Qualifying Features, by maintaining or restoring;</p> <ul style="list-style-type: none"> • The extent and distribution of qualifying natural habitats and habitats of qualifying species • The structure and

<p>Qualifying species: The site is designated under article 4(4) of the Directive (92/43/EEC) as it hosts the following species listed in Annex II:</p> <ul style="list-style-type: none"> • Grey seal <i>Halichoerus grypus</i> • River lamprey <i>Lampetra fluviatilis</i> • Sea lamprey <i>Petromyzon marinus</i> <p>• Annex I priority habitats are denoted by an asterisk (*)</p>	<p>Sandbanks which are slightly covered by sea water all the time, extensive intertidal mudflats, <i>Salicornia</i> and other annuals colonising mud and sand, and Coastal lagoons. As salinity declines upstream, reedbeds and brackish saltmarsh communities fringe the estuary. These are best- represented at the confluence of the Rivers Ouse and Trent at Blacktoft Sands.</p> <p>Upstream from the Humber Bridge, the navigation channel undergoes major shifts from north to south banks, for reasons that have yet to be fully explained. This section of the estuary is also noteworthy for extensive mud and sand bars, which in places form semi-permanent islands. The sand dunes are features of the outer estuary on both the north and south banks particularly on Spurn peninsula and along the Lincolnshire coast south of Cleethorpes. Examples of both Fixed dunes with herbaceous vegetation (`grey dunes`) and Shifting dunes along the shoreline with <i>Ammophila arenaria</i> (`white dunes) occur on both banks of the estuary and along the coast. Native sea buckthorn Dunes with <i>Hippophae rhamnoides</i> also occurs on both sides of the estuary. Significant fish species include river lamprey <i>Lampetra fluviatilis</i> and sea lamprey <i>Petromyzon marinus</i> which breed in the River Derwent, a tributary of the River Ouse. Grey seals <i>Halichoerus grypus</i> come ashore in autumn to form breeding colonies on the sandy shores of the south bank at Donna Nook.</p>	<p>function (including typical species) of qualifying natural habitats</p> <ul style="list-style-type: none"> • The structure and function of the habitats of qualifying species • The supporting processes on which qualifying natural habitats and habitats of qualifying species rely • The populations of qualifying species, and, • The distribution of qualifying species within the site. <p>This document should be read in conjunction with the accompanying <i>Supplementary Advice</i> document, which provides more detailed advice and information to enable the application and achievement of the Objectives set out above.</p>
---	--	--

Humber Estuary SPA (Including Humber Estuary Ramsar)		Site Ref:
Source: http://publications.naturalengland.org.uk/publication/5382184353398784?category=5758332488908800		UK9006111
Qualifying Features/Habitats	Site Description	Conservation Objectives
<p>The site qualifies under article 4.1 of the Directive (79/409/EEC) as it is used regularly by 1% or more of the Great Britain populations of the following species listed in Annex I in any season:</p> <ul style="list-style-type: none"> • A021 <i>Botaurus stellaris</i>; Great bittern (Non-breeding) • A021 <i>Botaurus stellaris</i>; Great bittern (Breeding) • A048 <i>Tadorna</i>; Common shelduck (Non-breeding) • A081 <i>Circus aeruginosus</i>; Eurasian marsh harrier (Breeding) • A082 <i>Circus cyaneus</i>; Hen harrier (Non-breeding) • A132 <i>Recurvirostra avosetta</i>; Pied avocet (Non-breeding) • A132 <i>Recurvirostra avosetta</i>; Pied avocet (Breeding) • A140 <i>Pluvialis apricaria</i>; European golden plover (Non-breeding) • A143 <i>Calidris canutus</i>; Red knot (Non-breeding) • A149 <i>Calidris alpina</i>; Dunlin (Non-breeding) • A151 <i>Philomachus pugnax</i>; Ruff (Non-breeding) 	<p>The Humber Estuary is located on the east coast of England, and comprises extensive wetland and coastal habitats. The inner estuary supports extensive areas of reed bed, with areas of mature and developing saltmarsh backed by grazing marsh in the middle and outer estuary. On the north Lincolnshire coast, the saltmarsh is backed by low sand dunes with marshy slacks and brackish pools. Parts of the estuary are owned and managed by conservation organisations. The estuary supports important numbers of water birds (especially geese, ducks and waders) during the migration periods and in winter. In summer, it supports important breeding populations of bittern <i>Botaurus stellaris</i>, marsh harrier <i>Circus</i></p>	<p>With regard to the SPA and the individual species and/or assemblage of species for which the site has been classified (the 'Qualifying Features' listed below), and subject to natural change; Ensure that the integrity of the site is maintained or restored as appropriate, and ensure that the site contributes to achieving the aims of the Wild Birds Directive, by maintaining or restoring;</p> <ul style="list-style-type: none"> • The extent and distribution of the habitats of the qualifying features

<ul style="list-style-type: none"> • A156 <i>Limosa limosa islandica</i>; Black-tailed godwit (Non-breeding) • A157 <i>Limosa lapponica</i>; Bar-tailed godwit (Non-breeding) • A162 <i>Tringa totanus</i>; Common redshank (Non-breeding) <p>A195 <i>Sterna albifrons</i>; Little tern (Breeding)</p> <p>Assemblage qualification: The site qualifies under article 4.2 of the Directive (79/409/EEC) as it is used regularly by over 20,000 waterbirds (waterbirds as defined by the Ramsar Convention) in any season: In the non-breeding season, the area regularly supports 153,934 individual waterbirds (five year peak mean 1996/97 – 2000/01), including dark-bellied brent goose <i>Branta bernicla bernicla</i>, shelduck <i>Tadorna tadorna</i>, wigeon <i>Anas penelope</i>, teal <i>Anas crecca</i>, mallard <i>Anas platyrhynchos</i>, pochard <i>Aythya ferina</i>, scaup <i>Aythya marila</i>, goldeneye <i>Bucephala clangula</i>, bittern <i>Botaurus stellaris</i>, oystercatcher <i>Haematopus ostralegus</i>, avocet <i>Recurvirostra avosetta</i>, ringed plover <i>Charadrius hiaticula</i>, golden plover <i>Pluvialis apricaria</i>, grey plover <i>P. squatarola</i>, lapwing <i>Vanellus vanellus</i>, knot <i>Calidris canutus</i>, sanderling <i>C. alba</i>, dunlin <i>C. alpina</i>, ruff <i>Philomachus pugnax</i>, black-tailed godwit <i>Limosa limosa</i>, bar-tailed godwit <i>L. lapponica</i>, whimbrel <i>Numenius phaeopus</i>, curlew <i>N. arquata</i>, redshank <i>Tringa totanus</i>, greenshank <i>T. nebularia</i> and turnstone <i>Arenaria interpres</i>. Non-qualifying species of interest: The SPA is used by non-breeding merlin <i>Falco columbarius</i>, peregrine <i>F. peregrinus</i> and short-eared owl <i>Asio flammeus</i>, and breeding common tern <i>Sterna hirundo</i> and kingfisher <i>Alcedo atthis</i> (all species listed in Annex I to the EC Birds Directive) in numbers of less than European importance (less than 1% of the GB population).</p>	<p><i>aeruginosus</i>, avocet <i>Recurvirostra avosetta</i> and little tern <i>Sterna albifrons</i>.</p>	<ul style="list-style-type: none"> • The structure and function of the habitats of the qualifying features • The supporting processes on which the habitats of the qualifying features rely • The population of each of the qualifying features, and, • The distribution of the qualifying features within the site. <p>This document should be read in conjunction with the accompanying <i>Supplementary Advice</i> document, which provides more detailed advice and information to enable the application and achievement of the Objectives set out above.</p>
--	--	--

Constituent SSSIs:

Humber Estuary SSSI

Area: 37,000.60 ha

Condition:

	% meeting area of favourable or unfavourable recovering	Favourable	Unfavourable - Recovering	Unfavourable - No change	Unfavourable - Declining	Partially destroyed	Destroyed	Not Assessed
Area (ha)	36,536.67	2,789.45	33,747.22	61.45	402.46			
Percentage	98.75%	7.54%	91.21%	0.17%	1.09%	0.00%	0.00%	0.00%

North Killingholme Haven Pitts SSSI

Area: 21.63 ha

Condition:

	% meeting area of favourable or unfavourable recovering	Favourable	Unfavourable - Recovering	Unfavourable - No change	Unfavourable - Declining	Partially destroyed	Destroyed	Not Assessed
Area (ha)	16.08		16.08	5.55				
Percentage	74.35%	0.00%	74.35%	25.65%	0.00%	0.00%	0.00%	0.00%

Saltfleetby SSSI-Threddlethorpe Dunes SSSI

Area: 971.86 ha

Condition:

	% meeting area of favourable or unfavourable recovering	Favourable	Unfavourable - Recovering	Unfavourable - No change	Unfavourable - Declining	Partially destroyed	Destroyed	Not Assessed
Area (ha)	971.86	765.61	206.25					
Percentage	100%	78.78%	21.22 %	0.00%	0.00%	0.00%	0.00%	0.00%

The Lagoons SSSI

Area: 70.19 ha

Condition:

	% meeting area of favourable or unfavourable recovering	Favourable	Unfavourable - Recovering	Unfavourable - No change	Unfavourable - Declining	Partially destroyed	Destroyed	Not Assessed
Area (ha)	70.19		70.19					
Percentage	100.00%	0.00%	100.00%	0.00%	0.00%	0.00%	0.00%	0.00%

Annex 2: Statutory Consultation bodies summary comments on 1st Version Pre-Submission HPNP HRA Screening Assessment

Environment Agency

“Having considered the nature of the policies in the Plan, we consider that it is unlikely that significant negative impacts on environmental characteristics that fall within our remit and interest will result through the implementation of the plan.”

Historic England

“On the basis of the information supplied, and in the context of the criteria set out in Schedule 1 of the Environmental Assessment Regulations [Annex 11 of 'SEA' Directive], Historic England concurs with the conclusion of the Heslington Neighbourhood Plan SEA Screening Report, set out on pg. 21, para. 7.1, that the preparation of a Strategic Environmental Assessment is not required.”

Natural England

“... should you allocate sites within the plan (as opposed to shaping policies) Natural England advise that the Neighbourhood Plan is progressed post the adoption of the Local Plan. Natural England in their response advocate an approach that does not allocate development sites and advises the plan should implement Development Management style policies to shape development. If this is the contents of the plan, the response states that it is likely to not need to go forward to either HRA or SEA.”

CYC

“However, since the production of your SEA and HRA, we have completed a revised HRA³ for the Local Plan, which includes consideration of new evidence commissioned by the Council including a Visitor Survey for the Lower Derwent Valley Special Protection Area (SPA). We recommend that the HRA should be updated to reflect this latest evidence prior to submission and we would be pleased to advise you on the additional changes required.”